



Application Note

OPOS 1.9 Driver V5.50 and SOTest Setup Instructions (USB Pole Display Test Application)

OPOS Driver V5.50 Setup Instructions.doc (Rev.A)
(This driver supports Windows NT, 2000 and XP only)

Per this Application Note, OPOS 1.9 driver V5.50 supports the following displays:

RS232 Models

PDK-0002	PDK-0003	PDK-0004	PDK-0005	PDK-004A	PDK-211U
PDK-225U	PDK-229U	PDK-4003	PDK-4005	PDK-404A	
PC305-0415	PC305-0415	PC305-041U	PC322-0415	PC322-041U	P324-0415
P330-0415	P330-041U	PM300-0415			

USB Models

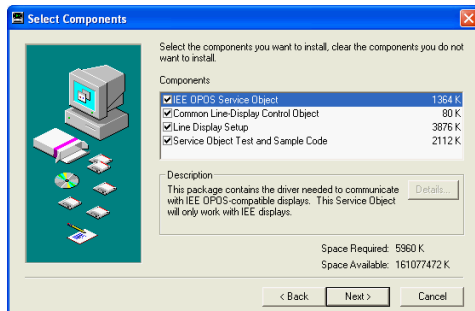
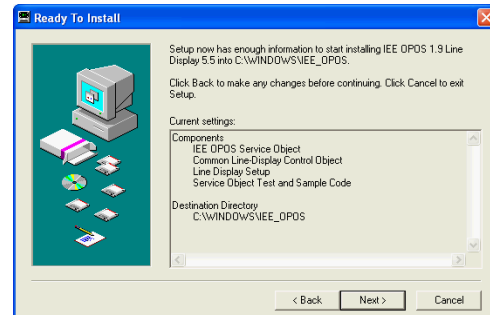
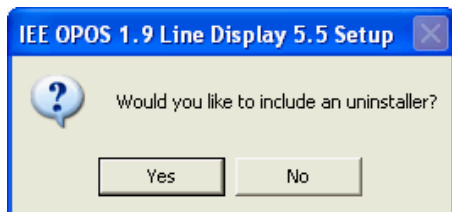
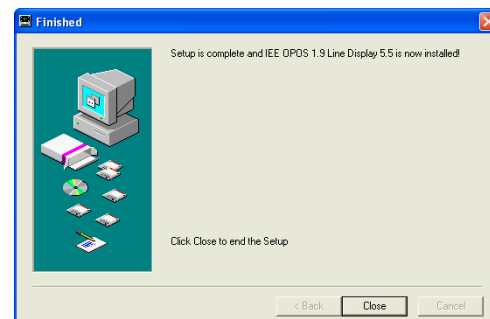
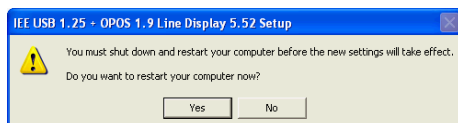
PDK-4U03	PDK-4U05	PDK-4UP3	PDK-4UP5	PDK-UP03	PDK-UP05
PDK-USB1	PDK-USB3	PDK-USB5	PC305-3415	PC322-3415	PC505-3415
PC522-3415					

OPOS Driver Installation:

- Run **IEE_OPOS_1.9_Line_Display_5.5_0.exe**.
 - Once installation is complete, test applications are available by selecting (**Start > All Programs > IEE OPOS**).
 - In addition, **Qual Test** application provided with installation package and referenced on **Test** page can be used.

Installation messages:

- For Open File - Security Warning message, click **Run**
- For Welcome and Important Notes messages, click **Next**
- Read Software License Agreement and click **Yes** to continue
- For Choose Destination Location message, click **Next** for default location: C:\WINDOWS\IEE_OPOS

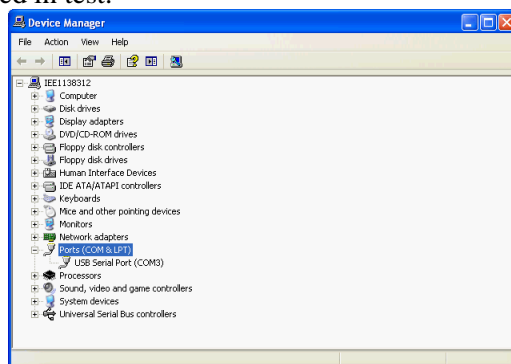
Click **Next**Click **Next**Click **Yes**Click **Close...**Click **Yes** to reboot...

After reboot, close following Line Display message that pops up on desktop...



Test:

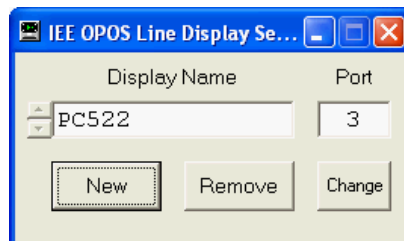
- With display installed to PC USB port, view USB Serial COM port # allocated. COM port # can be changed if desired. This port # shall be used in test.



- Preliminary OPOS Line Display Setup (prior to running test application)**

Skip this section if already done! – (See NOTE below)

- Initially run **IEE OPOS Line Display Setup** application from (Start > All Programs > IEE OPOS)
- IEE OPOS Line Display Setup message should be displayed as follows:



- Click New button and enter a new Display Name (Ex: PC522) in Display Name window.
- Enter assigned COM port number (obtained from displayed IEE USB Device COM message) into **Port** window for communication and click **Add** button when shown.

NOTE1: It will not be necessary to run **IEE OPOS Line Display Setup** application again prior to performing test applications unless the serial port changes. If the port does change, you will need to run **IEE OPOS Line Display Setup** again and change the port number for the Display selected and shown under **Display Name** by entering a new number in the Port window and clicking **Change** button.

- General Test: Qual Test Application**
 - Run **QualTest.exe** application – Application can be run from any directory.
 - In **Qual Test** application, click down arrow button of top window and select desired display name obtained from initial **IEE OPOS Line Display Setup**.
 - Click **Open** button and verify initial communication signified by **SPC522-3415** name indicated in application as shown below.
 - Click button **Start Marquee** and verify scrolling sequential ASCII characters.
 - Click button **Stop Marquee**. **Display H's** button can be used to fill display.
 - When done, click button **Close** to end test.

